



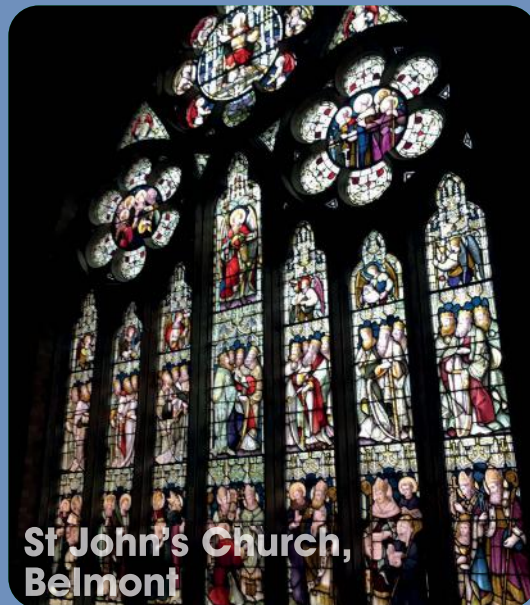




**Cover Photographs**  
**(Clockwise from top left)**  
St Mary's Church, Chilham  
Ditcheat Playground  
Emer Bog  
Thorverton Cricket Club



**Bishops Hull, Taunton**



**St John's Church, Belmont**

**“ LCF Fact**  
Over £3,900,000 was awarded between the North, South East and South West regions to over 125 projects. **”**

**Annual Review 2020/21**  
**Contents**

- 4 Welcome to the Annual Review 2020/21
- 5 Message from our Chairman
- 6 General Manager's Review
- 7 Message from our Donor

**Landfill Communities Fund**

- 8 Introduction
- 9 Financial Information
- 10 – 13 Funded Projects

**North**

**Community**

- 14 - 15 Walking Together Heritage Trail, Markham Colliery, Staveley
- 16 - 17 Hillstown Village Hall, Chesterfield
- 18 Monkey Park Play Area, Brampton

**Heritage**

- 19 Manchester Jewish Museum

**South East**

**Community**

- 20 St Mary's Church, Headley

**Heritage**

- 21 St Andrew's Church, Oddington

**South West**

**Community**

- 22 - 23 Ham Wall Reserve, Somerset
- 24 Tuckers Hall, Exeter

**Biodiversity**

- 25 Langford Lakes Nature Reserve, Salisbury

**Heritage**

- 26-27 Wellington Monument, Somerset

**Pennon Environmental Fund**

- 28-29 Farewell and Funded Projects

**Scottish Landfill Communities Fund**

- 30 Introduction
- 31 Funded Projects

**Community**

- 32 Ellon Castle Gardens
- 33 Joppa Tennis Club, Edinburgh
- 33 Falls of Clyde Wildlife Reserve

**The Team**

- 34 The Viridor Credits Board
- 35 The Viridor Credits Team



**Greenhill Methodist Church, Sheffield**



**Whitstable Castle, Kent**



## Welcome to the Annual Review 2020/21

Viridor Credits Environmental Company has been operating since 2001, funding projects through the length and breadth of England and Scotland, helping communities closer to you than you may realise. From sports clubs to churches, village halls to museums, wildlife trusts and historic buildings, so many communities have benefited from the funding we have been able to distribute.

Viridor Credits Environmental Company is one of the largest Environmental Bodies in the UK, providing funding opportunities for heritage, biodiversity and community projects in England.

This last year has been a difficult one due to the worldwide pandemic and we have had to adapt the way we administer the funding.

In total, approximately £146,835,000 has been awarded by Viridor Credits over the past 20 years.

We also provide the same in Scotland through the Scottish Landfill Communities Fund.

Viridor Credits administers funds donated voluntarily to the Landfill Communities Fund by Viridor, a company that is working to give the world's resources new life.

This brochure celebrates some of the achievements of our applicants over the last 12 months.

Don't forget to follow us on Social Media

 @ViridorCredits



Photo Credit: Tony Paine

Ham Wall Reserve



Despite the ongoing Coronavirus Pandemic the team have managed to continue receiving, processing and funding applications throughout what has been such a difficult year for everyone. This has resulted in yet another strong year for Viridor Credits distributing the Landfill Communities Fund (LCF) and the Scottish Landfill Communities Fund (SLCF) to so many communities throughout England and Scotland. Despite various lockdowns we have still been able to award almost £4 million to deserving projects in England and over £300k in Scotland.

The Board continues with its aim of ensuring that the majority of our funds go to those community projects which provide important facilities for everyone such as sports clubs, village halls and community centres. Although these facilities have had to remain closed to visitors during the year many have taken the opportunity to look forward and complete improvement projects.

Funded projects have been continually supported and in regular contact with the team. We have been able to extend deadlines where necessary to ensure almost all the projects funded prior to the pandemic have been able to complete their projects or will do in the near future. Total funding awarded for such projects increased to over 85%. However every one of the 149 projects funded in 2020-21 will make a real difference to the communities they serve and will be of even greater importance in the coming months as they begin to open up and communities start to get together again.

The main impact of the last year on the team at Viridor Credits has been the closure of our office in Taunton. As the staff were forced to work from home in March 2020 they were all pleasantly surprised at how simple the transition was, how little applicants were affected and business continued with no adverse effects. The new and improved website has been vital in keeping our applicants informed about the ever-adapting response to the Coronavirus. As the lease came to an end yet the impact of the virus continued it seemed a simple decision to make the move permanent.

Viridor continues to work hard to recycle and reuse as much waste as technology allows but landfill sites still play their part in the way the country manages its waste. We remain hopeful that our funding will continue for the foreseeable future which is great news for the

## Message from our Chairman Peter Renshaw

communities we will still be able to help. As part of the Budget announcement in March 2021, HM Revenue & Customs announced that the government will set the value of the LCF for 2021 to 2022 at £34.4 million, with the cap on contributions by landfill operators remaining at 5.3 per cent of their Landfill Tax liability. In Scotland the picture is less clear as landfill deposits decline despite the extension to the ban on Biodegradable Municipal Waste going to landfill from January 2021 until January 2025. However we hope to maintain funding in some form for at least another year.

As Chairman and on behalf of the Trustees, I remain incredibly proud of the continued achievements of Viridor Credits and I would also like to thank the team for their ongoing commitment especially in such unprecedented times. Zoom has proved so vital for us all but we are looking forward to moving away from the webcams and getting out and about to meet some of the amazing projects we have been able to fund.

Peter Renshaw  
Chairman



## General Manager's Review

### Alison Salvador



What an incredible year 2020-21 has been for everyone involved with Viridor Credits. I don't think anyone could have believed when we hastily left our office at the end of March 2020 that we would never again return to work there. We have all become accustomed to holding Funding meetings and Board meetings via Zoom (something we had not heard of before now seems second nature) and whilst initially we worked on laptops on our dining tables we moved our office furniture to our homes permanently in October 2020. I want to thank my team and the Board for supporting and assisting with all the necessary changes without any complaint. This ranged from hiring skips to clear an office, learning how to video conference, to testing and adapting new technologies to allow us to answer and

transfer phone calls from our homes. From conversations with applicants and reflecting on the funding achieved this year I am so pleased that we have been able to continue processing new applications and funding projects with no noticeable disruption. 'Business as usual' seems to be the ongoing mantra this year.

In a year like no other this has been the same for our project volunteers. Those already funded faced the additional challenge of completing work whilst areas were in various stages of lockdown and contractors were unable to get on site. Alongside our Regulators' guidance we were pleased to be able to offer many deadline extensions to ensure the majority of applicants have been able to complete their projects. Also many community volunteers saw the closure of their facility as an opportunity to begin vital improvement works – all continued whilst in the middle of a global pandemic. As I have expressed previously, this proves that when the task becomes harder so individuals resolve seems to increase. We have always understood the difference our funding has made to help with urgent improvements at such vital facilities as community halls, sports clubs, playgrounds, theatres and churches. This will only escalate as communities who have been unable to socialise for months now begin to open up and assess the urgent needs of the most vulnerable. We are so proud we can continue to help these communities.

Another major change in 2020-21 is that our funding began to be awarded by one central group. As funding decreases having one

national pot has ensured that we continue to fund the best projects regardless of their location. Despite months of few project site visits we have been able to assess projects using video conferencing, applicant videos and many other innovative ways applicants have found to showcase their proposed and completed projects. As Government guidance has allowed, we have been delighted to get out and about again to review new and completed projects and we look forward to meeting many more of our applicants over the coming months.

This year we have committed over £4 million to community, heritage and biodiversity projects and whilst keeping administration costs low, we have yet again managed to keep our uncommitted funds at an historic low. Despite the continued reduction in waste going to landfill sites we are looking forward to another year of funding in England and hope to also maintain some funding in Scotland for as long as possible although the picture is less clear there.

As ever, these results would not be possible without my dedicated team, our trustees and Michael, our representative in Scotland, who have all adapted and worked hard to ensure that our work continues even during such worrying and unprecedented times.

Alison Salvador  
General Manager



Viridor is committed to building a world where nothing goes to waste – a commitment which is evident in the continuing investment in plastics recycling and reprocessing and our energy recovery fleet, which attaches a purpose to waste which cannot currently be recycled.

Like everyone, 2020-21 has been a year which presented great challenges. More specifically for Viridor, it saw our colleagues appropriately identified as key workers performing an essential service. This is a service which continued uninterrupted when many aspects of our lives were put on hold. This demonstrated what we in the sector are very much aware of, the safe and responsible management of the UK's waste is a consistent and considerable responsibility, and this remains unchanged even in the face of a global pandemic like COVID-19.

## Message from our Donor

### Viridor

commitment to reducing greenhouse gas emissions. Viridor recently released the report 'Decarbonising our Waste: Viridor's Roadmap to Net Zero and Net Negative. This commits Viridor to reaching net zero greenhouse gas emissions by 2040 and net negative by 2045.

We are pleased to see communities across the UK continuing to value Viridor Credits and receiving support from the Landfill Communities Fund to continue their commitments to vital community projects, which so enrich the lives of residents across the UK. The range of the projects receiving funding always makes for inspirational reading and the results can be transformational.

Viridor continues to be appreciative of the clarity Viridor Credits always brings to the application process, making it easier for communities to understand how best to benefit from the fund. The detailed description of successful projects also helps to encourage others to come forward, ensuring available funding always finds the best home.

Kevin Bradshaw  
Viridor CEO

We are proud of our colleagues who continued to report for duty on sites across the UK, following a series of additional health and safety protocols designed to ensure their safety and to keep the UK's resource and waste management sector moving. Nothing is more important to us than the safety of our staff, and this remains the foundation of our HomeSafe policy – ensuring everyone goes home safe.

From its close relationship with our local authority and commercial clients, Viridor knows that this continuing focus on a high-quality service was very much appreciated.

Amid all changes which have taken place within Viridor following the completion of the sale of the business to global investment firm KKR, we remain unwavering in our commitment to building the crucial infrastructure the UK needs.

This is demonstrated in our plans to increase our polymers recycling and reprocessing infrastructure in the UK beyond the new Avonmouth Polymers Reprocessing Plant, near Bristol, which will be the UK's biggest multi-polymer plants. Recycling and processing infrastructure investments such as these are crucial to the UK achieving its circular economy ambitions.

Landfill remains an important means of processing non-recyclable waste, with our sites employing best practice and state-of-the-art technology to harness landfill gas and generate electricity in parts of the UK not served by energy recovery. However, the increasing shift remains one focused on landfill diversion and a



## The Landfill Communities Fund Introduction

The Landfill Communities Fund (LCF) is an innovative tax credit scheme enabling operators of landfill sites in England and Northern Ireland to contribute money to organisations enrolled with ENTRUST as Environmental Bodies (EBs).

The Government introduced landfill tax in 1996 to discourage the disposal of waste to landfill and promote more environmentally sustainable methods of waste management.

Landfill Operators (LOs) are organisations which are licensed to run landfill sites. LOs may be private companies, local authority owned companies, local authorities or even sole traders. LOs contribute to the LCF by claiming a tax credit against the landfill tax liability for a contribution to an enrolled EB.

Since its inception in 1996, the LCF has supported more than 68,500 projects across the UK with contributions from landfill operators totalling £1.72 billion.

(Stats correct as of 27 June 2021 – [www.entrust.org.uk](http://www.entrust.org.uk))



**Boyton Marshes, Suffolk**



**The Cricket Centre, Wallington**



**Chilton Polden Playing Field**

“ **LCF Fact**  
Viridor Credits funded an average of **30 projects** per quarter in England. ”



**St Mary's Church, East Brent**

## Financial Information

(excluding Pennon Environmental Fund)

In 2020/21 Viridor Credits allocated £3,834,927 from the Landfill Communities Fund to 120 projects throughout England.

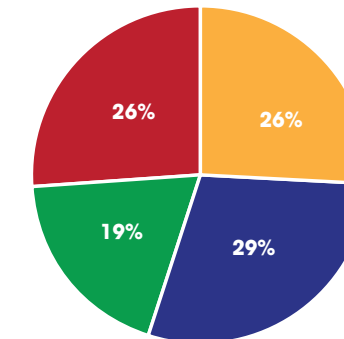
Funding of £268,267 was awarded to 9 projects to repair, preserve or renovate places of historical or architectural interest or places of worship.

Funds of £3,339,265 were allocated to 105 projects to create, sustain or develop a community facility.

Funding of £227,395 was shared between 6 projects to conserve habitats and native species this financial year.

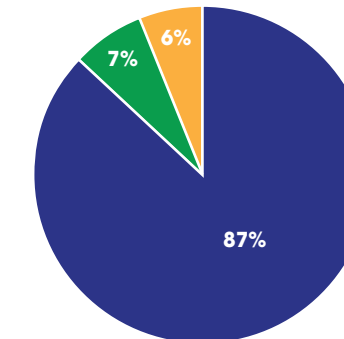
This year a total of £874,916 was awarded to projects that were mainly outdoors, this included; play parks, nature reserves and sporting facilities.

**Funding Allocated by Region**



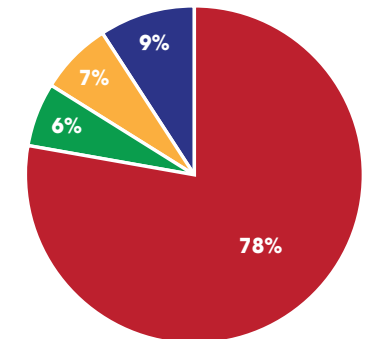
- North
- South East
- South West
- VC Board

**Funding Allocated by Object**



- Community
- Heritage
- Biodiversity

**Funding Allocated to Outdoors**



- Playgrounds
- Parks and Reserves
- Sports
- Overall Funding

## All Regions

## Biodiversity Projects

**Little Woolden Moss, Irlam Manchester**  
Heathland Habitat Restoration  
£58,862

**Cutacre Nature Reserve, Wigan**  
Habitat Restoration  
£11,008

**Moss Valley Woodlands Nature Reserve, Sheffield**  
Restoring Long Wood  
£24,590

**Boyton Marshes, Suffolk**  
Lagoon Creation  
£40,000

**Cavenham Quarry**  
Connecting Rare Brecks Habitat  
£42,935

**Emer Bog and Baddesley Common, Romsey**  
Land Purchase  
£50,000

North  
Community Projects

**St Peter's Church, Levenshulme**  
West Window Restoration  
£59,621

**St John's Church, Walton, Warrington**  
Disabled Access Ramp  
£27,105

**Mastin Moor Gardens,**  
Refurbishment of Paths & Surrounds  
£4,563

**St Cyprian's Church Hall, Frecheville**  
Refurbishment  
£49,662

**Court Hey Park, Knowsley**  
Path Improvements  
£19,800

**Greenhill Methodist Church, Sheffield**  
External Improvements  
£35,472

**Ramsey Cricket Club**  
Storage Garage  
£21,972

**Staveley Miners Welfare FC**  
Car Park Works  
£87,171

**Oldham RUFC**  
Disabled Liff and Toilets  
£100,000

**Sedgley Park Rugby Club, Manchester**  
Floodlights  
£7,486

**Urban Church, Warrington**  
Heating  
£20,524

**St Anne's Church, Royton**  
Heating  
£6,500

**Birkin Avenue, Chesterfield**  
Recreation Area  
£50,000

**Syke Methodist Church, Rochdale**  
New Community Area  
£48,206

**Milnrow Cricket Club, Rochdale**  
Community Space  
£19,250

**Harwood Methodist Church, Bolton**  
Community Kitchen  
£13,000

**Bacup Cricket Club**  
Extension  
£17,499

**Chesterton Village Playing Fields**  
Improved Security  
£4,365

**Swinton Salvation Army**  
Extension  
£49,970

**Hindsford AFC, Tyldesley**  
MUGA Resurfacing  
£18,500

**The Edge Theatre & Arts Centre, Chorlton**  
Improving Access  
£39,633

**Golborne Sports & Social Club**  
New Auto Cricket Roller  
£11,270

**Unsworth Community Hub, Bury**  
Refurbishment  
£20,167

**St Paul's Parish Church, Widnes**  
Cafe/Servery and Furniture  
£26,025

**St Anne's Church, Aigburth**  
Boiler  
£48,100

**Heyside Cricket Club, Royton**  
New Netting Facilities  
£25,475

**Daisy Hill Football Club, Bolton**  
Ground Maintenance Machinery  
£24,294

**The Grace Centre, Bolton**  
Kitchen Refurbishment  
£30,400

**Coal Aston Village Hall**  
Car Park  
£9,956

**Thornberry Animal Sanctuary**  
Community Cafe Kitchen  
£27,324

**Ferry Meadows, Peterborough**  
Play Area Surfaces  
£25,000

**Greenhill Community Library, Sheffield**  
Heating System  
£29,760

**Urmston Sports Club**  
Ball-stop Netting  
£4,495

**10th Warrington Scout Hut, Great Sankey**  
New Welfare Building  
£49,893

**Whalley Range Cricket & Lawn Tennis Club**  
Additional Net Lane  
£11,328

**Austerlands Cricket Club, Oldham**  
Training Facility  
£25,000

**St Peter's Church, Bolton**  
New Entrance and Galleries  
£100,000

**Whitworth, Bacup**  
Wild Play Area  
£94,899

North  
Heritage Projects

**St Peter's Church, Levenshulme**  
West Window Restoration  
£59,621

**Our Lady of Mount Carmel, Manchester**  
Brickwork Restoration  
£20,000

South East  
Community Projects

**Nonington Cricket Club**  
Practice Nets  
£16,800

**Holy Cross Church Community Hall, Motspur Park**  
Roof  
£21,912

**Barford St Michael, Banbury**  
Village Hall Improvements  
£20,721

**Kesgrave Tennis Club, Suffolk**  
Court Resurface  
£10,000

**Millfield Play Area, Faversham**  
New Equipment  
£24,496

**St John's Church, Belmont**  
Hall Improvements  
£10,488

**All Saints' Church, Hitcham**  
Community Hub  
£68,293

**Kingston Playground**  
Upgrade  
£38,961

**The Cricket Centre, Wallington**  
Indoor sports Area Upgrade  
£25,072

**St Mary Magdalene Church, Wandsworth Common**  
Accessible Facilities  
£18,219

**Bromley Common Cricket Club**  
Nets Replacement  
£12,038

**Oyster Bowls Club, Whitstable**  
New Bowling Carpet  
£39,760

**Carshalton Lawn Tennis Club**  
Court Resurfacing  
£36,728

**Farnworth Cricket Club**  
New Practice Compound  
£29,150

**West Wickham & Shirley Baptist Church, Croydon**  
Ramp  
£9,447

**Church of the Good Shepherd, Tadworth**  
Hall Floor & Roof  
£29,813

**Copdock & Washbrook Village Hall, Ipswich**  
Hall Modernisation  
£18,850

**New Diorama Theatre, Camden**  
Public Spaces Project  
£47,000

**Chessington Cricket Club**  
Practice nets  
£17,436

**Camdens People's Theatre**  
Access Transformation Phase 1  
£99,781

**Debenham Community Centre, Stowmarket**  
Refurbishment  
£73,919

**Whitstable Castle**  
Play Area  
£82,738

**The Hope Centre, Ipswich**  
Kitchen and Café Refurbishment  
£67,535

South East  
Heritage Projects

**St Mary's Church, Chilham**  
Chancel Roof  
£4,953

**The Ipswich Unitarian Meeting House**  
Restoration  
£50,000



2020/21

## LCF Funded Projects

**St John's Church, Belmont**  
West Window Restoration  
£18,400

**Creeping St Peter Church, Stowmarket**  
Tower, Window and Floor Repairs  
£5,360

**St Leonard's Church, Streattham**  
East End Windows and Roof Repairs  
£25,000

## South West Community Projects

**St Michael's and All Angels' Church, Bawdrip**  
Churchyard Wall  
£6,882

**Memorial Park, North Petherton**  
Facilities Upgrade  
£47,827

**Ashcombe Village Club, Dawlish**  
Internal & External Renovation  
£33,650

**Bridgwater Sea Cadets**  
Hall Refurbishment  
£50,000

**Exeter Cathedral**  
Chapter House Renovation  
£50,000

**Newton St. Cyres Tennis Club**  
Floodlight Replacement  
£10,270

**St Francis' Church Hall, Bridgwater**  
Replacement Doors & Windows  
£44,796

**Victory Hall, Stogursey**  
Furniture & Kitchenware  
£14,918

**St Peter and St Paul Church, Bleadon**  
Parish Room  
£48,251

**Chilton Polden Playing Field**  
Equipment  
£55,000

**Ditchheat Playground, Shepton Mallet**  
Safety Matting  
£4,123

**Kenn Cricket Club**  
Electric Supply  
£3,197

**Mark Moor Bowls Club**  
Clubhouse Flooring  
£2,269

**1st Dawlish Scout Hut**  
Kitchen  
£7,728

**Liverton United FC, Newton Abbot**  
Clubhouse Renovations  
£22,368

**Thorverton Recreation Ground**  
Replacement Mower  
£3,637

**Middlezoy Rovers Football Club,**  
Community Function Room and  
Toilets Fit Out  
£19,500

**Trefoil Lodge, Exeter Girl Guides**  
Kitchen & Toilet  
£15,000

**John O'Donnell Pavilion, Yeovil**  
Community Room  
£40,000

**Stokeinteignhead Cricket Club**  
Equipment Upgrade  
£23,459

**Thorverton Millennium Green**  
Replacement Mower  
£14,680

**Combe Recreation Ground**  
Car Park Renewal  
£7,500

**Thorverton Cricket Club**  
Net Improvements  
£23,834

**Stokeinteignhead Village Hall**  
Land Purchase for Access  
£15,000

**Westfield United Reformed Church, Bridgwater**  
Heating  
£17,877

**Over and Nether Compton Memorial Hall**  
Refurbishment of Tithe Barn  
£46,974

**Ocombe Farm, Paignton**  
Access  
£25,000

**Engine Room, Bridgwater**  
Facility Improvements  
£12,433

**Trent Village Green**  
New Play Area  
£24,439

**Long Sutton Village Hall**  
Refurbishment  
£25,000

**Mincinglake Valley Park, Exeter**  
Access  
£17,153

**St Thomas a Becket Church, Lovington**  
Accessible WC, Servery and Gallery  
£47,589

**East Huntspill Cricket Club**  
Wicket Covers  
£4,633

**Abbotskerswell Cricket Club, Newton Abbot**  
Two Bay Net Facility  
£24,540

**Holy Trinity Church, Blackford**  
External Access  
£18,034

**Shobrooke Park Cricket Pavilion**  
Rethatch  
£15,250

**Huntspill and District Cricket Club**  
Two Bay Net Practice Facility  
£32,000

**Bovey Tracey AFC**  
Pitch Drainage  
£23,961

**Charlton Mackrell**  
Play Area  
£30,000

**Henstridge Play Area**  
New Play Equipment  
£54,032

**Batcombe Playing Field, Shepton Mallet**  
New Play Equipment  
£58,976

**1st Somerton Scout HQ**  
Refurbishment  
£71,630

**Mark Cricket Club**  
New Pavilion and Scoreboard  
£94,103

**Brewham Village Hall**  
Restoration Phase 2  
£99,994

**Bishops Hull, Playing Field, Taunton**  
New Equipment  
£8,537

## South West Heritage Projects

**St Mary's Church, East Brent**  
Restoration  
£50,000

**Broomfield Church, Bridgwater**  
Repairs and Conservation  
£34,933



**St Thomas a Becket Church, Lovington**



**The Cricket Centre, Wallington**

“ **LCF Fact**  
In 2020/21 Viridor Credits funded over **£874,900** to 31 projects supporting sport and wellbeing. An average of 23% of our total funding for England ”



**Community – North**  
**Walking Together Heritage Trail, Markham Colliery, Staveley**

The historically significant walking trail is to remember miners who lost their lives in three major disasters in Markham Colliery. 106 miners lost their lives in the disasters of 1937, 1938 and 1973, which had a huge impact on the local communities and the surviving relatives with some households losing up to three members of their family at once. The colliery closed in 1994 and a new business park was established by Derbyshire County Council.



**Marching to Pit**

With much of the mining landscape changed beyond recognition a trail from Duckmanton to the pit was established, lined by galvanised steel figures, each one represented a known miner from the disasters. Funding has been incremental and Markham Vale Heritage Group and Beam with Derbyshire County and the trail has been developed in distinct phases. This phase consisted of figures, some blackened to symbolise miners returning from the pit.

The steel figures were designed by Stephen Broadbent and each figure has a circular bronze miner's tag fixed on his chest. On the underside is stamped the name of the miner killed, his age and occupation. On the front of the tag is stamped the name and year of the disaster.



**Marching from Pit**



**Installation**

All Photos Credit to Derbyshire County Council

**“ Peter Storey,  
 Derbyshire County Council**

We were delighted to be awarded a grant of £30,000 through Viridor Credits Environmental Company, through the Landfill Communities Fund, to fund a group of 15 figures. This grant enabled us to join up the two ends of the trail creating a transition resulting in visitors experiencing the wider sense of the trail. ”



**Rear and Name**



**Route Before**



**VC Plaque**



**Front & Tag**



Community – North  
**Hillstown Village Hall, Chesterfield**



**New Entrance**

In 1975, the village purchased several portacabins to create a new village hall. Over time, the cabins started to deteriorate, with the flat roof constantly leaking and the

exterior at the mercy of the elements. Viridor Credits was approached to help make the building water-tight again; fully boarding the existing roof and covering



**Hall Interior**



**Hall Interior**

with high-tensile felt. The hall committee also clad the exterior of the hall to create an attractive and welcoming community building for the village and beyond.



**Battening**



**Cladding**



**Cladding**



**Cladding Complete**



**Original Entrance**

**“ Fiona James - Development Officer, Hillstown Miners Welfare Trust**

Prior to the funding of £65,000 by Viridor Credits, Hillstown Village Hall would often receive comments from our users and members of the community stating that the outside of the building really did not reflect the fantastic facilities within. Since the project completed we have received so many glowing comments from locals and users. More people are noticing the community facility and want to get involved.





**Community – North**  
**Monkey Park Play Area, Brampton**

Monkey Park play space was tired and worn out. The play area was well over twenty years old, the equipment was in poor condition and the safety surface was worse, unsafe and hazardous.

The very active Friends Group has been instrumental in raising funds to install three seats. Viridor Credits has funded £45,929 to enable the provision of a new play space comprising multiplay climbing and sliding structures, a roundabout, swings and see saw. The grant also paid for new safer surfacing, ground graphics and play mounds.

This is a well supported and used community play area that is now safe to use.



**Work in Progress**



**Work in Progress**



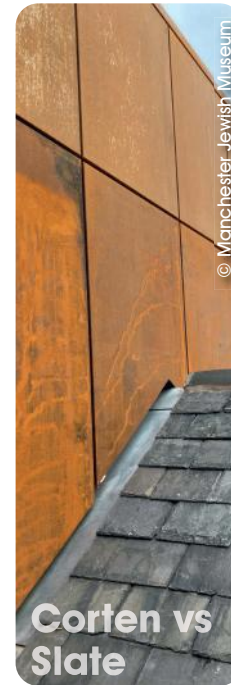
**Old Equipment**



**New Play Area**



**New Play Area**



**Corten vs Slate**

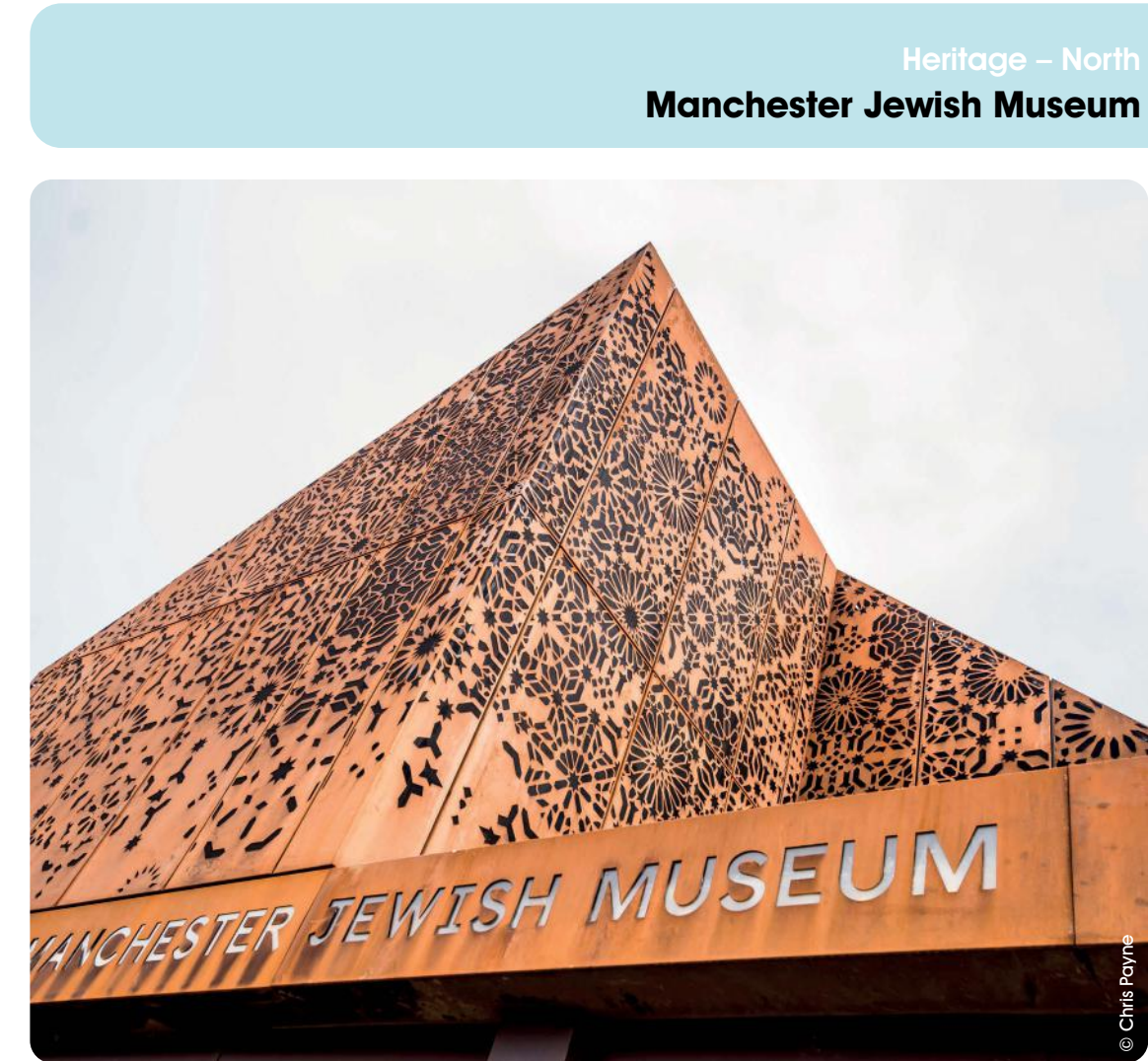


**Roofing in Progress**



**Slates Lined Up**

Manchester's Spanish and Portuguese synagogue has served the area since 1874. Now listed, it survived the Manchester blitz while the terraced houses that surrounded it were destroyed. These houses were replaced by an industrial estate,



**Heritage – North**  
**Manchester Jewish Museum**

shopping centre and the most ethnically-diverse road in the UK, speaking over 70 languages. To continue to serve its community through outreach and engagement, the synagogue is undergoing a £6m redevelopment, of which Viridor

Credits contributed £100,000 towards the roof of the museum. This funding helped to stabilise and weather-proof the roof, protecting the precious collections from water ingress.

© Chris Payne



Community - South East  
**St Mary's Church, Headley**

St Mary's Church is a beautiful Victorian church that was consecrated in 1860. Toilets and a servery for the provision of refreshments or a meeting room were not considered then. Times change along with the usage of the Church taking on a wider range of activities

An extension was planned, and over several years of planning, approval and fundraising it has been completed. The extension comprises an attractive octagonal building (that has become known as The Octagon) that is entered from the nave of St Mary's or externally. It is equipped with toilets and a servery and has a useful and attractive area for meetings and circulating. To make the opening in the nave a stained glass window had to be removed and repositioned in the Octagon.



Base



Frame



Roofing



Mark Out



Octagon Illuminated



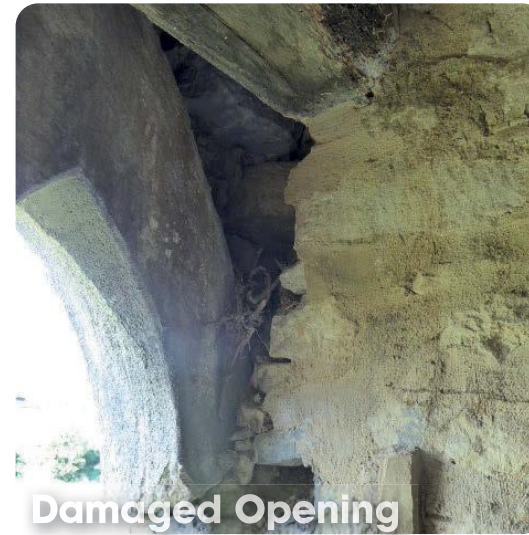
Exterior Entrance



Finished Interior

“ George Nixon -  
 Project Leader

The donation of  
**£40,000** received  
 from Viridor Credits  
 was a great help to us  
 in reaching our target.



Damaged Opening

Since 2011, St Andrew's church has been undergoing extensive repairs and improvements, thanks in the main to a new highly-motivated committee. Previous awards from Viridor Credits helped to prevent water ingress and make general repairs to the bells and churchyard wall. Internally, the PCC set to making the church more comfortable for community use with



St Andrew's Church



St Andrew's Church Tower

improved electricity supply, heating, lighting and redecoration. The most recent phase of repairs has focused on the tower, which had become unsafe causing stonework slippage around the high-level windows. An award of £20,000 has helped to secure the stonework on the tower and the future of the church as an attractive community building.

Heritage - South East  
**St Andrew's Church, Oddington**



Tower with Scaffold

“ Dr Mark Stanley-Price,  
 Lay Chair of PCC

The net effect is highly admired and the parish reassured that we know the tower is now strong and secure, despite hardly any visible change. Thanks have been given to all those who have helped maintain the church through this last year; principal amongst these must be Viridor Credits Environmental Company.





Community – South West  
**Ham Wall Reserve, Somerset**



RSPB Ham Wall is a 267-hectare nature reserve near Glastonbury in Somerset. The RSPB has been involved at Ham Wall for 25 years, recreating wetland from old peat working for the benefit of numerous rare and endangered species of wetland bird.

The Ham Wall Reserve is an important wetland area that attracts migratory species of birds; startling murmurings are the main attraction from late September to March and the reserve is also a significant breeding ground for the bittern.

Greater and lesser egrets and little bitterns are new colonisers to the reserve as conservation work continues to reap benefits. A large proportion of bird species on the reserve and adjacent wetlands are officially "at risk". There are birds that are now rare to the UK and are seldom seen; Savi's Warbler being a good example and when news of a possible sighting spreads the enthusiasts are drawn out. RSPB's conservation efforts also benefits mammals such as water voles and otters.



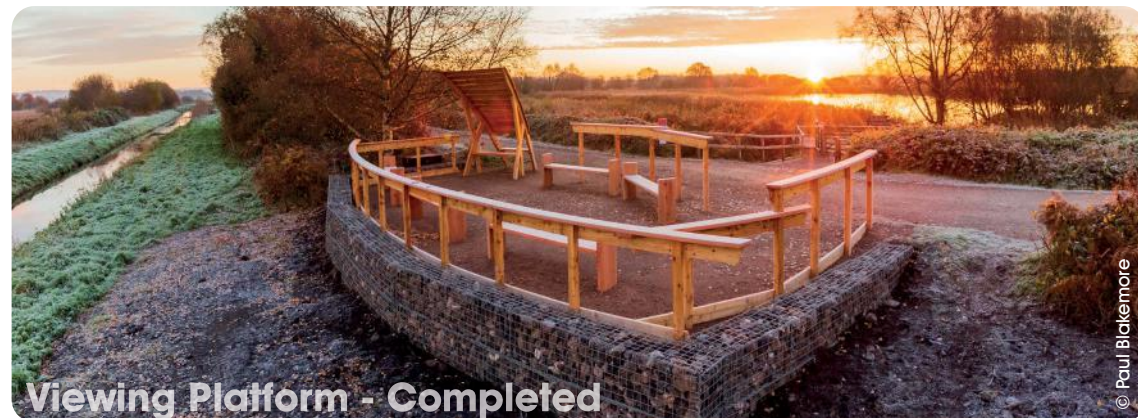
The reserve is very popular visitor destination with up to 70,000 people arriving each year, but some of the viewing points used by visitors were reaching the end of their life and were in need of replacement and updating. This became the focus of an award from Viridor Credits.

During the project two old viewing platforms were removed and replaced with new ones to a much more robust and functional design. A group of the reserve volunteers took down and rebuilt three viewing screens



to a new and more accessible design. The new interpretation panels were installed in these new viewing areas. The project also aimed to improve the available seating and bike racks for visitors and provide a place for the reserve to allow people to experience the wetland by canoe.

The canoe trail allows a closer experience with the wetlands and will increase user experience as a whole. The use of canoes on the local rivers and rhynes has increased over the last year and helps people engage more with nature.



**Steve Hughes, Fundraising Manager**

Overall the project has vastly improved the visitor facilities and accessibility of the reserve and this has been reflected in the positive comments we have received from the people who visit the site.



**Creation of the Canoe Trail**

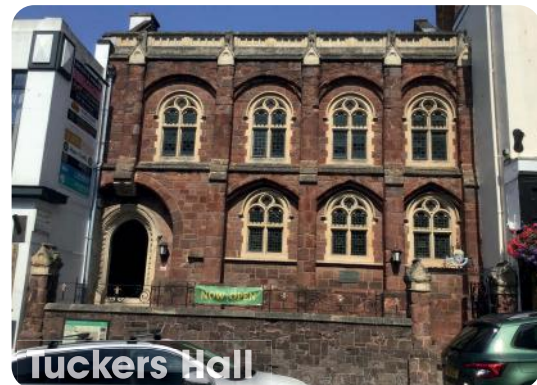




**Community – South West**  
**Tuckers Hall, Exeter**

2020 was the 400th anniversary of the Royal Charter granted to the Incorporation of Weavers and Shearmen, the occupants of Tuckers Hall. 2021 will also mark the 550th anniversary of the commencement of building in 1471.

The Royal Crest which graces the prime position in the Hall over the Master's chair was sadly faded, failing to respect its regal provenance. The external stonework was showing the ravages of age with some in a dangerous state. The staircase windows and glass fire door provide fire protection between the original and contemporary elements of the building whilst maintaining good visual connection between both. The exquisite historic main Hall has previously suffered fire damage from external sources and needed to be protected against any future similar event.



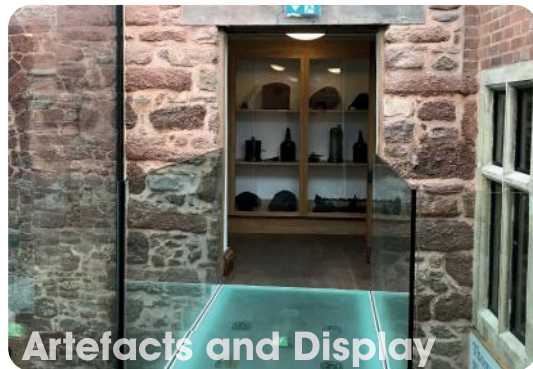
**Tuckers Hall**

Viridor Credits was approached to fund elements of the larger project to maintain and restore the Hall and to ensure its long term well-being. Funding of £29,985 was given towards the external stone repairs, a new staircase window; crest conservation and upgrading the entrance.

The glazed lobby screen offers the opportunity to keep the heavy and slightly intimidating front door open in all weathers to enhance the visitor welcome into the building whilst reducing heat loss. All these elements contribute significantly to the future safety of the building.



**Main Hall**



**Artefacts and Display**



**New Gate**



**Royal Crest**



**New Scrape with Ditch System**



**Common Sandpiper**

Langford Lakes is a former gravel pit that later became a trout farm, which was eventually taken over by Wiltshire Wildlife Trust. As former gravel pits, most of the lakes are deep despite softening around the edges and some reshaping by WWT. Breeding birds favour shallow transitions from wetland edges to water and plenty of them! The Trust sought funding of £42,212 to create a much shallower scrape system, with edges not more than nine to ten inches deep. A feeder ditch was created with sluices to control the water from Great

**Biodiversity – South West**  
**Langford Lakes Nature Reserve, Salisbury**



**New Scrape - Winter**



**Lapwing**

Meadow at the east end, connecting to East Clyffe Lake to the north.

The Trust's aim was to expand an area of nationally-important wetland habitat, creating a hectare of additional wetland habitat incorporating a shallow wet scrape feature, feeder ditch system and water control structures, and using the gravel and clay spoil to create a gravel bar and islands on a neighbouring lake.

"The new habitat attracts rare red list bird species and is being grazed by sheep to



**Yellow Wagtail**

maintain the habitat. Soon after completion of the works, flocks of lapwing and nine greenshank were spotted on the new wetland features, demonstrating that the scrape, islands and shallow shelf were immediately benefitting species of concern. Since the New Year a variety of species have been regularly observed, including common sand piper, green sand piper and yellow wagtail (a red list species)."

- Dugald McNaughtan.



## Wellington Monument, Somerset

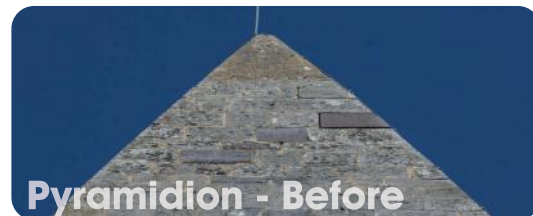


Work in Progress

Wellington Monument, Somerset, is the tallest three-sided obelisk in the world and an incredibly important local landmark. However, its condition had deteriorated since the last programme of repairs in the 1980s and it had been fenced off for public safety for more than 15 years. One of the biggest areas of concern was the pyramidion; the very peak of the structure.

The National Trust has looked after the site since 1934 and has undertaken several major repairs. However, water ingress, the exposed nature of the site and failure of some previous repairs were all contributing factors to the fencing off and closing of the internal staircase. The damage was clearly visible with numerous large cracks, bulges, holes and fallen masonry. The building needed urgent and significant repair.

During the project there has been a huge amount of local interest and visitors to the site have increased significantly. The local community take a great deal of pride



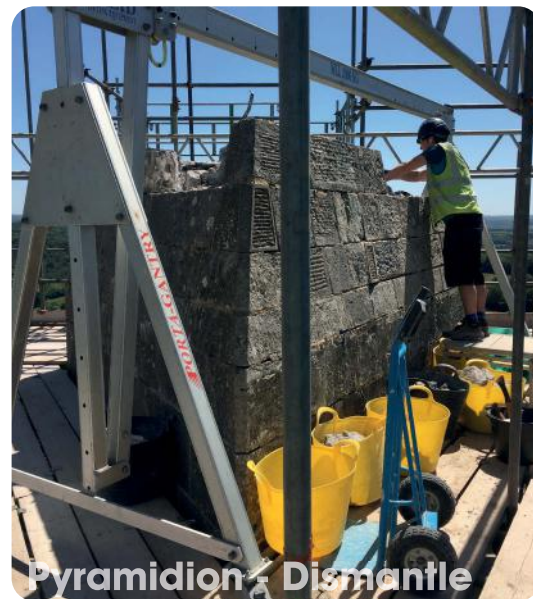
Pyramidion - Before



Damage to Walls



Pyramidion Dismantle



Pyramidion - Dismantle

and ownership of the site and have been vital to raise funds for the wider project. They have shared their stories of just why the monument is so important to the local area.

Once the work is completed on all elements, the fence surrounding the monument will be removed and people will once again be able to climb to the top and see the incredible views.

The monument was built following the Duke of Wellington's success at Waterloo in 1815 (the Duke having taken his title from the town of Wellington). It was funded through local subscription but cash soon ran out and it sat unfinished until the Duke's death in 1852. It wasn't finally completed to its current height of 175 feet until the 1890s.

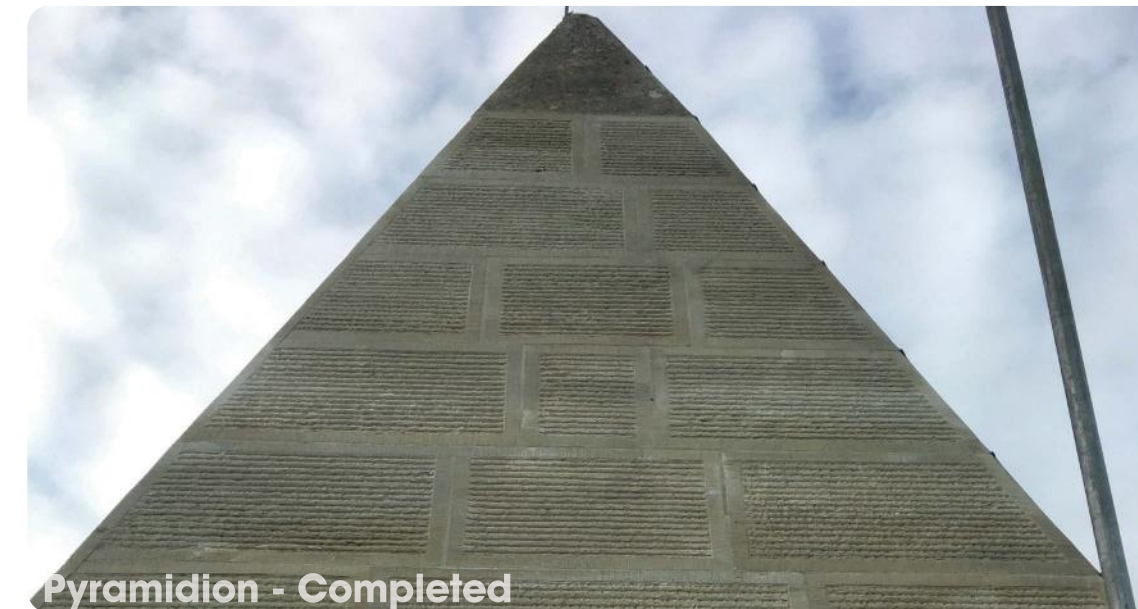
The small size of the pyramidion stones

meant more joints for water to get in. This water was able to run through the monument washing out mortar and leaving holes behind the front-facing stones. The funding from Viridor Credits was vital in removing the existing pyramidion and replacing it with a new design of larger stone that tessellate to greatly reduce water ingress. It was a huge task that required a crane to both bring down the old stone and then take back up the replacement stone. Each stone was cut precisely to size and then expertly placed and secured by the team of masons.

Further works funded by Viridor Credits were some of the corner stones or 'quoins' and stone replacement just beneath the pyramidion.



Pyramidion - Removed



Pyramidion - Completed

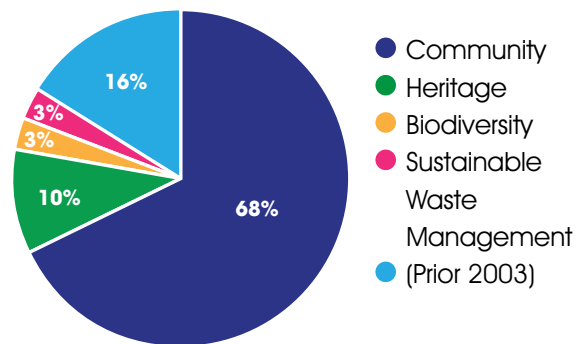


## Pennon Environmental Fund Farewell

Since 1996, Pennon Environmental Fund (PEF) has been providing essential funding to communities throughout Devon and Cornwall. The scheme was set up to allow Viridor and, later, Viridor Credits to use Landfill Communities Fund monies in areas of South West Water's (SWW) operations. Following Pennon's sale of Viridor in 2020, the fund has now been wound down and final funds were awarded in the second quarter of 2020.

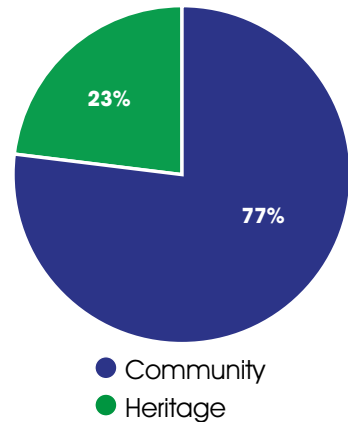
The fund leaves a legacy of boosting the area's wildlife, saving historic buildings and enhancing community facilities. Over 24 years 202 projects have been funded throughout every corner of the peninsula, and £3,075,230 distributed throughout the two counties.

% Breakdown of Object Types over the Funding Life of PEF



## 2020/21 Funding Allocated by Object

Funding Allocated By Object



In 2020/21 six projects were funded before the scheme was wound down. The total amount of funding for the scheme for this last year was £67,157.

The following photos are the last projects funded through the Pennon Environmental Fund.

Please note that applications within ten miles of the Heathfield landfill site in Devon are still eligible for funding up to £100,000

### St James the Greater Church, Sheldon

Leaded Windows Repair  
£15,170



### St Bartholomew's Church, Warleggan

Toilets & Store Room  
£6,397



### Cheriton Fitzpaine Playing Field

Play Park  
£13,026



### Morwenstow, Bude

Outdoor Play Park  
£7,481



### Hemyock Bowling Club

Replacement Mower  
£7,083

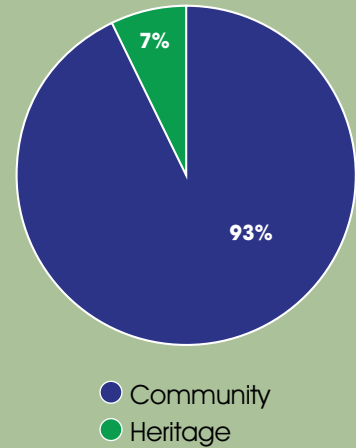


### Beer Albion FC, Seaton

Clubhouse Expansion and Improvement  
£18,000







The Scottish Landfill Communities Fund (SLCF) is a tax credit scheme, linked to Scottish Landfill Tax that encourages landfill site operators to provide contributions to Approved Bodies (Viridor Credits is an Approved Body in Scotland), which can then pass the funds onto community, heritage and environmental projects. The SLCF has now been in existence for five years having replaced the UK scheme in Scotland in April 2015.

Viridor Credits is able to consider applications from any sites in Scotland that are within 10 miles of an active landfill site or a transfer station. This allows the SLCF to fund even more projects than before. As with the rest of the UK, Scotland was in lockdown for much of the year and this impacted on progress for some funded projects, which were unable to have tradespeople on site. Some applicants found it difficult to secure co-funding for their projects because many funders shifted their emphasis to providing Covid related awards and fundraising events such as coffee mornings and sponsored walks had to be cancelled. Some communities even found it difficult to meet to discuss proposals, as not all had access to virtual meetings. However, Viridor Credits funded 23 projects totalling £324,025 - an increase of approximately 9% over 2019/20.



**Michael Cunningham**  
Project Liaison Manager



**Joppa Tennis Club, Edinburgh**  
Court Upgrade  
£18,297

**The Maranatha Community Centre, Motherwell**  
Improvement Works  
£19,308

**St Cadoc's Church, Halfway**  
New Accessible Toilet and PA System  
£6,722

**East Kilbride United**  
Pitches  
£21,870

**The Royal Deeside Railway, Banchory**  
Bridge  
£13,628

**St Patrick's Parish Church, Wishaw**  
Hall Refurbishment  
£11,908

**Loch of Blairs, Forres**  
Maintenance Equipment  
£2,640

**Birkhill Play Area, Dundee**  
Path repairs  
£17,076

**Christ Church Morningside, Edinburgh**  
Replacement Boilers  
£6,000

**Lanark Tennis Club**  
Replacement Court Surface  
£8,936

**St Peter's Church, Kirkcaldy**  
Window repair and disabled parking  
£7,613

**St Benedict's Church, Easterhouse**  
Lighting Improvements  
£19,422

**Bishopton Parish Church, Renfrewshire**  
Masonry Conservation  
£23,577

**Longiddry Villa FC**  
Floodlighting  
£3,000

**Christ Church, Falkirk**  
Replacement of Rainwater Goods  
£5,772

**Dirleton Bowling and Social Club**  
Clubhouse Refurbishment  
£24,000

**West Barns, Village Hall, East Lothian**  
Improvements  
£25,000

**Falls of Clyde Wildlife Reserve**  
Boardwalk  
£3,575

**The Hidden Gardens Glasgow**  
Community Hub  
£25,000

**Focus Youth Project Glasgow**  
MUGA  
£15,000

**Boat of Garten Woods**  
Woodland Wheels Pump Track  
£25,000

**Hillhead Sports Club Glasgow**  
Upgrading of Grass Training Facility  
£10,040

**St Bernadette's Church, Motherwell**  
Heating Improvements  
£10,641



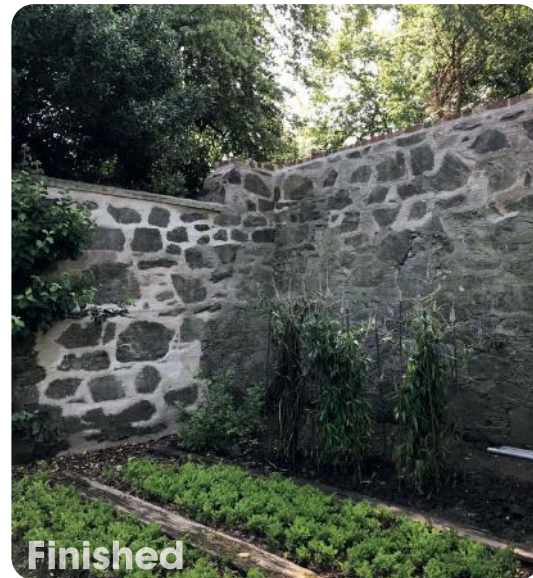
Community - Scotland  
**Ellon Castle Gardens**



**Ellon Castle Gardens**



**Re-Pointing**



**Finished**



**Before**

The old 15th-century Ellon Castle overlooks the gardens that reached their current size and splendour in the early 18th century and were once considered one of the finest in Scotland, containing a unique collection of ancient English yew trees thought to be at least 500 years old. Though still a popular destination for visitors, the structures and horticultural elements have been allowed to fall into disrepair and neglect in recent times. Viridor Credits was requested to fund £43,535 for the south and east wall inner face repair, part of an overall project to restore a seven-acre high-walled garden and woodland site.

The future is looking good for the gardens with a three-phase plan set out to restore pathways, replant the east, south-west and west terrace borders, stabilise the old Ellon Castle Ruin and Garden House and create a new visitor centre.

Community - Scotland  
**Joppa Tennis Club, Edinburgh**



**Joppa Tennis Club**

The Club was established around 1920 to play on local authority tennis courts which they still do through a lease agreement. The Club is a not for profit volunteer run club that maintains the tennis courts for the local community.

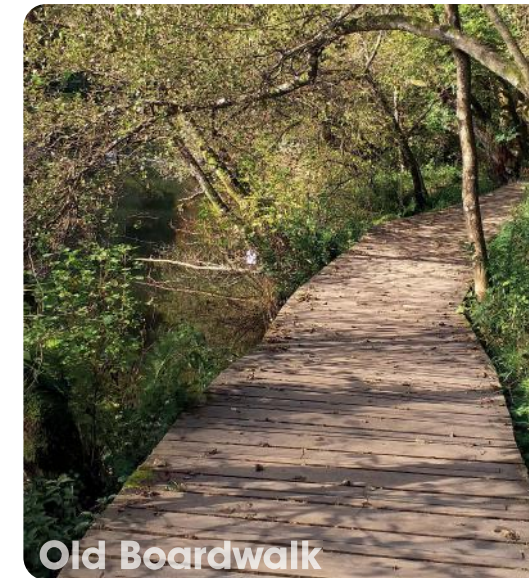
The two courts started to crack and become unsafe to play on and drainage was a problem. New surface was required and the drainage improved along with associated fencing works which culminated in a new surface that is slip resistant and playable in all weathers. Viridor Credits were approached for funding of £18,297 for the new court surface.

The new court surfaces have improved the look of the club with a resultant increase in membership.



**Cracked Courts**

Community - Scotland  
**Falls of Clyde Wildlife Reserve**



**Old Boardwalk**



**Installing Grips**



**Boardwalk**

Around 60,000 people visit the reserve annually to walk through the woodlands and view the spectacular waterfall, Corra Linn. Wet weather access has always been an issue. The boardwalk originally had non slip grips installed on every other board along its 300m length. However, in wet and wintry weather it becomes very slippery making it a danger to the user. Viridor Credits was approached to fund £3,575 towards the cost of installing grips on all boards to ensure an improved and safer experience for all users.



## The Viridor Credits Board

### The Board

The objectives of the Viridor Credits Board are to promote community participation and partnership as well as supporting environmentally-friendly projects with an emphasis on volunteering, sustainability, value for money and proven need.

### Funding Group

The Viridor Credits Funding Group is comprised of the General Manager, Operations Manager, Project Liaison Officer, Grants Officer and Finance Officer. All decisions to fund are made by the group following the application process and the pre-assessment visit. The group is highly experienced in delivering funding to projects with the most positive outcomes for communities and the environment. The funding group's decisions are overseen by the Viridor Credits Board.

### General Manager

Alison Salvador is responsible to the Board of Trustees for the leadership, strategic direction and overall management of Viridor Credits.



#### From Left to Right:

Dan Cooke, David Robertson,  
Peter Renshaw (Chairman),  
Mary Prior CVO MBE, Simon Calford.

## The Viridor Credits Team

2020/21 has seen a move from the fixed office working at Taunton to home working due to the COVID pandemic. Home working has now fully taken over with Viridor Credits no longer having a base of operations. This has meant a change in dynamics of the team but the working of the team has stayed the same.

Gareth Williams, Operations Manager is responsible for delivering the operational function of Viridor Credits, including applications, compliance and communications. Gareth manages a team of two who work together to deliver funding to our applicants.

All applications submitted to Viridor Credits are handled by the Grants Officer, Tony Painter with the help of other team members. The applications are processed with the emphasis on cooperation with the applicant and any enquiries are discussed with the applicants to ensure eligibility and compliance with the rules of the schemes. The Project Liaison Officer in England, Dr Nick Berry and the Project Liaison Manager in Scotland, Michael Cunningham, will visit every project prior to consideration for funding and completion. This team is managed by the Operations Manager.

Finances are administered by Karen Chilcott who works with the General Manager, Alison Salvador.



#### From Left to Right:

Gareth Williams, Karen Chilcott,  
Tony Painter, Nick Berry and Alison Salvador



**Viridor Credits Environmental Company**

PO Box 977  
Taunton  
TA1 9PQ

[enquiries@viridor-credits.co.uk](mailto:enquiries@viridor-credits.co.uk)

[www.viridor-credits.co.uk](http://www.viridor-credits.co.uk)

**T: 01823 476 476**



[@ViridorCredits](https://twitter.com/ViridorCredits)