



Valencia
Communities
Fund

Annual Review

2023/24





CONTENTS

Annual Review 2023/24

- 4 Message from our Chairman
- 5 General Manager's Review
- 6 Message from Valencia Waste Management
- 7 Financial Breakdown - England
- 8/9 Funded Projects - England

North Projects

- 10 HOME Arts Centre
- 11 Oldham Parish Church
- 12 Astley Bridge Cricket Club
- 13 Highfield Park, Chesterfield

South East Projects

- 14 St Peter's Church, Copdock
- 15 Souldern Village Playground
- 16 Piddington Village Hall

South West Projects

- 17 Bridgwater Baptist Church
- 18 Budleigh Salterton Cricket Club
- 19 The Alice Cross Community Centre
- 20 Holy Trinity Church, Blackford Wedmore

- 21 Financial Breakdown - Scotland
- 22 Funded Projects - Scotland

Scottish Projects

- 23 Meadowmill Sports Centre
- 24 St Athanasius' Church, Carlisle
- 25 St Boswell Lawn Tennis Club

- 26 The Board
- 27 The Team



Welcome to the Annual Review 2023/24



**Valencia
Communities
Fund**

About Valencia Communities Fund

Valencia Communities Fund administers funds donated voluntarily to the Landfill Communities Fund and the Scottish Landfill Communities Fund by Valencia Waste Management. We support a wide range of community, heritage, and biodiversity projects throughout England and Scotland.

This year we have awarded £3,574,542 to 105 projects across England and Scotland, funding £3,127,854 between 91 projects to sustain or develop community facilities, £227,811 allocated to 10 projects to repair, preserve, or renovate places of historical or architectural interest or places of worship, and a further £218,877 allocated to four environmental projects. Within this brochure are some of the achievements of our applicants over the last 12 months.

About the Landfill Communities Fund

In 1996, the Government introduced The Landfill Tax Act to discourage the disposal of waste to landfill and promote more environmentally sustainable methods of managing waste. Part of this Act included the Landfill Tax Credit Scheme, the forerunner to the Landfill Communities Fund.

About the Scottish Landfill Communities Fund

The Scottish Landfill Communities Fund (SLCF) is a tax credit scheme, linked to Scottish Landfill Tax, which encourages landfill site operators to provide contributions to Approved Bodies (Valencia Communities Fund is an Approved Body in Scotland).

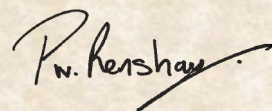
Message from our Chairman

It has been another remarkable year building closer ties with our sponsor Valencia Waste Management who took over the landfill sites in March 2022. We have welcomed another representative to the Board, Patrick Hughes and John Lockwood, formerly CEO of Viridor Credits also joined - both bringing additional expertise in landfill and the LCF.

Despite the continued reduction in waste going to landfill sites we are delighted to have been able to award almost £3.3 million to projects in England and over £300,000 to projects in Scotland. This funding has enabled many community spaces to be renovated and refurbished to better serve their local communities. It is vital to invest in these types of facilities to ensure they can operate and serve the young, elderly, vulnerable, providing safe spaces to meet and socialise.

We were delighted to see in the recent budget that HM Revenue & Customs announced the government will set the value of the LCF for 2024 to 2025 at £30.9 million, maintaining the cap on contributions by landfill operators at 5.3 per cent of their Landfill Tax liability. Unfortunately, in Scotland the upcoming ban on Biodegradable Municipal Waste going to landfill will mean that this will be our last year of funding. It will be sad to see the scheme close, but we remain incredibly proud of all the projects we have been able to support.

As Chairman, I am honoured to be part of the continued achievements of Valencia Communities Fund. On behalf of the Board, I would like to thank the staff who have worked tirelessly to ensure the best projects are funded and then supported on their journey and my fellow trustees for their commitment and expertise throughout the year. We are all looking forward to another busy and successful year.



Peter Renshaw
Chairman



General Manager's Review

This has been yet another busy but rewarding year of awarding grants to projects across England and Scotland. I am proud of the team, what we have achieved and the continued support we have been able to give to our applicants as they complete the sometimes-complex application process and then continue on their journey towards a much-improved community space.

I am so pleased to be able to report that in 2023-24 we were able to fund 105 well deserving community, heritage, and biodiversity projects in England and Scotland. We know that they will make a huge difference to the communities they so vitally serve. Most of these are run by an incredible team of volunteers and it has been wonderful to be able to meet so many of them this year. They all give up much of their free time to keep these facilities open and available in these financially trying times. Many of these have welcomed us on our visits and some have even opened their doors to us for Board and team meetings.

In recognition of Queen Elizabeth II's platinum jubilee in 2022 we created a jubilee legacy fund and offered grants of up to £300,000. The successful projects are now almost at completion stage, and we look forward to visiting them, seeing the positive effect, and lasting legacy that these projects will have.

As always, I must take this opportunity to thank my team, our sponsors and the trustees who remain, as always, professional, hard working and incredibly supportive.



A handwritten signature in black ink, which appears to read 'Alison Salvador'. The signature is fluid and cursive, with a long horizontal line extending to the right.

Alison Salvador
General Manager

A Message from Valencia Waste Management

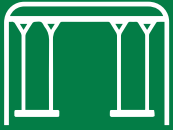
Valencia Waste Management is a leading provider in waste management services and is the largest privately-owned landfill business in the UK. Waste disposal in landfill remains an important part of waste hierarchy and we pride ourselves on our impeccable safety and compliance standards in delivering this critical infrastructure. We are also proud to play our part in restoring sites and improving biodiversity.

Valencia continues to be truly impressed with the work done by Valencia Communities Fund and all the volunteers involved in maintaining and improving such vital local amenities. The ongoing variety of projects that we have been able to support through the fund is remarkable and we are certain they will make a real and lasting difference to the quality of life and the environment across our active landfill operating areas.

We look forward to continuing to work with the Trustees and team at Valencia Communities Fund who have been distributing the funding to the most deserving projects over many years. Although we will have to cease our funding in Scotland due to the ever-decreasing waste being sent to Dunbar landfill, we are delighted to continue to support projects in the vicinity of our six landfill sites in England. Everyone involved from the team, the Board and especially those working as volunteers to deliver these projects at grassroots level should be very proud of the work being done and the projects completed.



Number of Projects per Facility Type



9 Play parks



18 Churches



21 Village Halls



6 Public Spaces



29 Sports Clubs



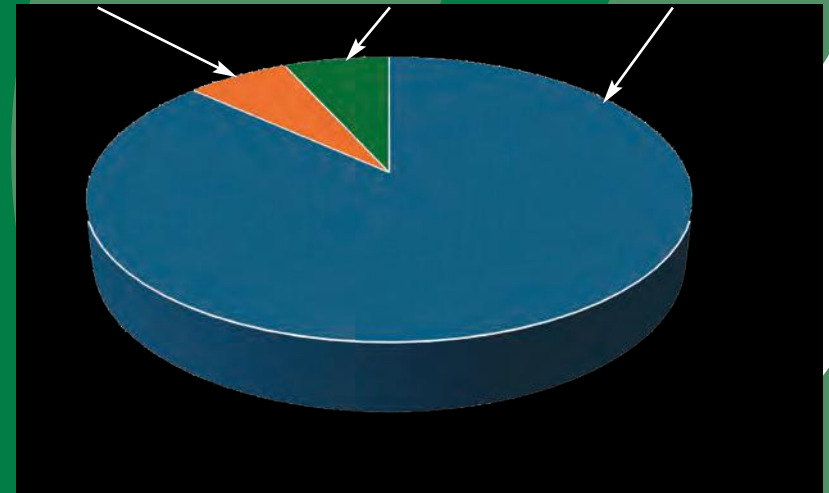
4 Nature Reserves



Landfill Communities Fund

Valencia Communities Fund has allocated £3,245,212 from the Landfill Communities Fund to 87 projects throughout England in 2023/24. Funding of £2,814,264 was awarded between 75 projects to create, sustain, or develop a community facility. Funds of £212,071 was allocated to 9 projects to repair, preserve, or renovate places of historical or architectural interest or places of worship. Funding of £218,877 was allocated to 3 biodiversity projects.

Heritage 6% Biodiversity 7% Community 87%



Projects by Object

Landfill Communities Fund

NORTH

Woodbank Cricket Club, Bury
Extension
£89,800

Brandon & Wolston Village Hall
Roof & Insulation
£66,190

Roe Green Tennis Club, Salford
Court Renewal
£60,000

Creating Lives, Bury
Roof & Internal Improvements
£60,000

Rochdale Cricket, Lacrosse &
Squash Club
PV Panels
£50,000

Stand Cricket Club, Whitefield
Changing & Toilet Facilities
Refurbishment
£50,000

Rawtenstall Cricket Club
Pavilion Update
£50,000

Ashton under Lyne Cricket, Bowls
& Tennis Club
Accessibility
£50,000

Whitefield Bowling Club
Refurbishment
£49,080

Portico Vine ARLFC, St Helens
Floodlights
£48,870

Bolsover Parish Rooms
Repair & Modernise
£48,087

Ellesmere Sports Club, Worsley
Re-roof
£46,500

St Mary's Church, Worsley
Heating
£45,660

Fusilier Museum, Bury
Renovation
£42,450

Treeton Memorial Community
Centre
Roof & PV Panels
£41,172

Rochdale Tennis Club
LED Court Floodlights
£38,880

Rossendale Sports Club
Solar Panels & Storage
£36,750

Prestwich Cricket, Tennis &
Bowling Club
Floodlights
£35,000

Cowpe Community Hall
Refurbishment
£31,883

Tapton Park Play Space,
Chesterfield
Refurbishment
£30,820

Widnes Cricket Club
Solar Energy & Battery Storage
£26,435

Peterborough Lions Rugby Club
Perimeter Fencing
£22,850

Boz Park, Whitefield
Footpath & Site Improvements
£22,480

Thirlmere Road, Chesterfield
Play Space Refurbishment
£21,846

422 Community Hub, Manchester
Green Energy Storage Batteries
£20,958

Widnes RUFC
Clubhouse Upgrades & Repairs
£20,370

Devonshire Avenue North,
Chesterfield
Playground Upgrade
£19,438

Cornerstone Church, Liverpool
Kitchen Refit
£16,900

Cutthorpe Village Hall
New Kitchen
£13,709

Mastin Moor Gardens, Staveley
Shelter & Café
£8,353

Anston Cricket Club, Sheffield
Practice Nets
£7,080

Unsworth Cricket & Tennis Club
Clubhouse Refurbishment
£7,050

SOUTH EAST Heritage Projects

St Mary's Church, Bucklesham
Roof Repairs
£49,363

Church of St John the Baptist,
Wimbledon
West Wall Repair
£37,317

Church of St Mary & St Lawrence,
Great Bricett
Internal Render
£30,620

St Peter & St Paul Parish Church,
King's Sutton
Interior Redecoration
£26,777

St Giles' Church, Kingston
Tower Restoration
£15,000

St Mary's Church, Flowton
Internal and External Repairs
£6,689

SOUTH EAST

St Peter's Church, Aylesham
New Roof
£100,000

Northgate Community Centre,
Canterbury
Heating & Ceiling Upgrade
£85,320

West Faversham Community
Centre
Heating and Room Upgrade
£85,175

Memorial Field, Chartham
Public Toilets
£65,865

St Margaret's Church,
Womenswold
Kitchen & Toilet
£65,407

All Saints' Church, Canterbury
Improvements
£55,000

Aylesham Welfare Leisure Centre
Solar Panels & Water Heaters
£50,000

Windmill Community Centre,
Deddington
New Roof
£50,000

Bromley Town & Old Bromleians
Cricket Club
Practice Nets
£49,999

Southern Village Playground
New Equipment
£48,702

Middleton Stoney
Playground Refurbishment
£47,640

Charlton on Otmoor
Park Improvement
£44,778

Faversham Pools
Heating
£44,554

Grundisburgh Tennis Club
Refurbishments of Courts
£27,219

Nonington Cricket Club
Pavilion Improvements
£22,123

Wickhambreaux Village Hall
Toilet & Access
£21,336

St Michael's Church, Aynho
Electricity Supply
£19,553

Bramford & District Social Club,
Ipswich
New Boiler, Windows and Doors
£16,654

Charlton Memorial Hall
Windows & Curtains
£16,319

Battisford & District Cricket Club,
Stowmarket
Electronic Scoreboard
£6,685

St Mary the Virgin Church,
Kirtlington
Pathway Repairs and Upgrading
£3,941

SOUTH WEST Heritage Projects

St Michael The Archangel,
Trusham
Tower and Lych Gate Repairs
£24,418

St Augustine's Church, West
Monkton
Restoration of Lady Chapel Roof
£15,887

Edithmead Church, Highbridge
Roof Repairs
£6,000

SOUTH WEST

Longdown Village Hall, Devon
Entrance & Toilet Refurbishment
£66,148

Plainmoor Community Pool
Air & Dehumidification System
£61,320

Bridgwater & Albion RFC
Floodlight Upgrade
£58,740

Topsham Swimming Pool
Improvements
£55,000

Weston-super-Mare Cricket Club
Practise Nets and Pitches
£50,000

Victoria Park, Buckfastleigh
Play Park
£49,800

Exeter Athletic RFC
Three-Phase Electricity
£46,451

The Royal Oak, Stoke St Gregory
Internal Reconfiguration
£45,911

The Alice Cross Centre,
Teignmouth
Lift Refurbishment
£44,490

Torquay Athletic RFC
Solar Panels
£36,152

Woolavington Village Hall
Heating
£28,018

Lawns Recreation Ground,
Bishopsteignton
Playground Refurbishment
£27,491

St Boniface Church, Whipton
PV Panels
£23,940

The Temple Methodist Church,
Taunton
Roof Repair and Upgrade
£20,000

Huish Tigers RFC, Taunton
Generator and Changing Rooms
£20,000

Teign Valley Community Hall,
Christow
PV Panels
£16,020

The Royal Oak, Stoke St Gregory
Kitchen Refurbishment
£15,976

Cockhaven Close Playground,
Bishopsteignton
Refurbishment
£15,940

Stoke St Gregory Playing Field
Youth Shelter
£11,424

Park Life Cafe, Heavitree
PV Panels
£11,332

Headlands Playing Field,
Broadhempston
Replacement Mower
£5,230

Biodiversity All areas

Westhay Moor NNR, Somerset
Peat Restoration
£100,000

Ferry Meadows, Peterborough
Gunwade Lake Reedbed Creation
£50,000

Rackenford Moor, Devon
Fencing
£40,231

Cutacre Nature Reserve, Tyldesley
New Grassland
£28,646

North Projects

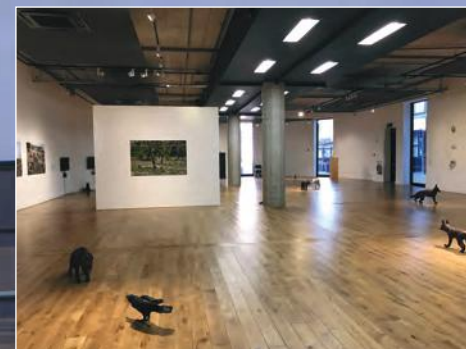
HOME Arts Centre

Valencia Communities Fund Board of Trustees awarded HOME Arts Centre a total of £69,807 to change the lighting throughout the building's public and operational spaces from standard to LED light bulbs, and to replace the projector in the main gallery space.

HOME has changed nearly 300 lights from standard bulbs to LED, reducing the energy consumption by 80% per bulb, and a new projector has been installed in the gallery. This adds up to £16,000 savings on energy bills allowing the centre to be more financially resilient.

"On behalf of everyone at HOME and all of our service users, I would like to say an enormous thank you for your generous support. You have made an immense difference to HOME, making us more sustainable and more accessible, meaning that we can continue to be a valuable resource for our communities."

Roisin Joyce, Director of Development



Lighting before



Projector



Box office after - photo: Paul Karalius



LED lights after - photo: Paul Karalius

Oldham Parish Church

Oldham Parish Church was built in 1830 and is a Grade-II* listed building. The heating system had become inefficient and costly to maintain and run so it was decided to replace the old heating system with a modern, environmentally-friendly and efficient heating system.

The PCC applied to Valencia Communities Fund for £61,520, the total cost of the new system. After an award in full from the Board, the old boilers, which were in the crypt, and the four-inch cast iron heating pipes from the three aisles were removed. These were replaced by a number of large radiators and finned pipes which run down the side of the church.

Since the work has been conducted, the church is delighted to have had a number of requests from various community groups, choirs, and local schools to use the church and also as a resource for community work in the town centre of Oldham.



Old radiator



New radiator



Old pipework



Old boilers



New boilers

Astley Bridge Cricket Club

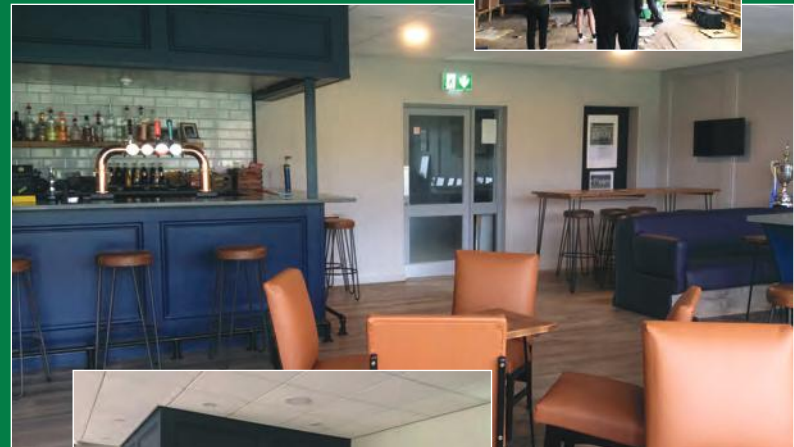
The old clubhouse interior had become extremely dated and unwelcoming for the local community. The layout also restricted use as a multi-user facility, so the club requested £50,000 from Valencia Communities Fund towards the re-modelling and modernisation of the clubhouse.

The whole club house was stripped of its old fixtures and fittings in one day by a horde of volunteers followed the next day with specialist workers arriving to create the new space.

The result is a clubhouse that has been transformed into a fresh modern space to be enjoyed by all. It has been a successful project with increased bookings, as the space is a much more functional and desirable place to be, and members are spending more time within the lounge area.



Old bar area



Bar area completed



Club house

Highfield Park, Chesterfield

Highfield Park is a large open community park with lots of sports pitches, a small MUGA, basketball ball enclosure and fine views to the north. Within the park, the play area was a large, uninspiring area of mostly bare tarmac with some sad pieces of ageing equipment well over 25-years old and in dire need of refurbishment.

The council, working with local children, their parents and carers developed proposals for a new play space. Play equipment companies provided solutions based on initial ideas from the local community which were then put to a public vote.

The council approached Valencia Communities Fund for funding towards this project and they were awarded £39,750.

The new equipment provides for a wide range of play experiences; rocking, rotating, swinging, climbing, social play and ground graphics to name but a few. The new play space is proving extremely popular with visitors to the park.



Park before



Park before

South East Projects

St Peter's Church, Copdock

This is a popular church that is very well cared for by the wardens and is host to a multitude of events, including a dozen weddings a year and a sit-down meal for 90 people on the pews. This was despite not having toilets or a decent kitchenette on site. The PCC was awarded £100,000 from Valencia Communities Fund towards the expensive and complex task of installing toilets and reconfiguring the interior.

The ornate Victorian tower screen was moved further into the church to accommodate a DDA-compliant toilet, with the kitchenette being built at the edges of the tower entrance along with a bell-ringing gallery. The large font, which was hidden behind the church door was moved to the Elizabethan side chapel where it could be better viewed and used.

The new cupboards were designed to blend with the old screen, and the new toilet, whilst occupying quite a large area at the base of the tower, is fully accessible and an asset to this church. The new bell ringing platform has been well designed and made from reclaimed wood to reduce the impact of the project on the environment.

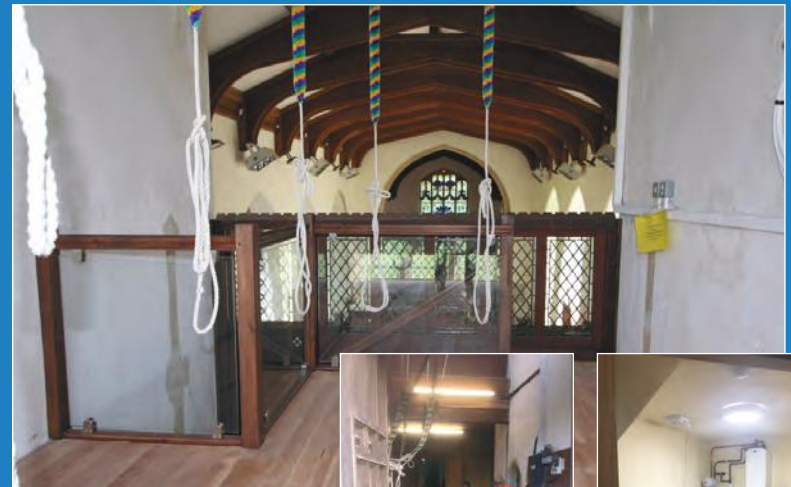
This is a church that is community-facing and keen to bring more people into the church for secular and religious activities. This project will help to achieve this aim.



Font original position



Font new position



New bell platform



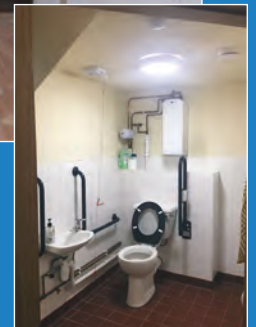
Screen before moving



Screen after moving



New water supply



New toilet

Souldern Village Playground

Situated in a busy recreation area next to the village hall, the former wooden playground was condemned by RoSPA mid-pandemic and cordoned off. This did not stop local families breaking through the cordon and using the equipment, prompting the parish council to remove the old wooden equipment. However, the council was sensitive to the needs of local families and consulted with the village as to the requirements for a new play park and wider recreation area.

The total cost of the new playground was in the region of £120,000 and Valencia Communities Fund awarded £48,702 towards the project. This funding was enough for the first two phases of the plan and there will be further phases to enhance both the playground and the playing fields as a whole. This has been a remarkable transformation from grassy scrub to a fantastic play area.



Zip wire and witches hat



Climbing tractor



Before



Climber and slide



Roundabout

Piddington Village Hall

Piddington is a small village six miles from the market town of Bicester. The village hall became the only social facility after the public house closed in 2013 and is well used by the local community. The Trustees felt that solar panels would be a useful addition to the hall with three main benefits: reduction in energy costs allowing hire rates to be kept at a reasonable level; reduce the carbon footprint of the hall and finally to enhance the status of the hall as a designated emergency hub by allowing storage of energy to maintain essential services.



Roof before

The Village Hall Management Committee applied to Valencia Communities Fund for £38,928 towards the £40,428 cost of the project. The works were undertaken in the summer of 2023 with the installation of 22 solar panels, along with two inverters, and two 3.10Kwh batteries. The installation allowed the village hall to become self-sufficient in electricity use throughout the summer months. The hall is a designated reception centre for the local community and outlying areas in the event of a major power outage or other emergency incidents. The batteries will provide power for services in the hall when required.

As an added bonus, the solar panels allow for the export of surplus electricity back to the grid, providing a small income generation for the village hall to cover maintenance.



Battery wall

South West Projects

Bridgwater Baptist Church



An unused basement in a popular church in Bridgwater was transformed into a vibrant community café after an award of £71,768 from the Valencia Communities Fund Board of Trustees. What was a dark, rubbish-filled space with damp and drainage problems became the focus of

plans that would see the creation of a new coffee bar, focused on mental wellbeing, new kitchen, plus a 1-2-1 counselling room, new glass entrance lobby plus storage space. The building work dealt with damp and drainage as well as unblocking windows to open and light up the rooms.

The work in the basement has completely transformed a disused space with bare brick walls into a bright community cafe. There is a main counter with coffee machines, tables, chairs, imaginative decoration, and a small kitchen to one side. There is also a small prayer room or counselling room with vaulted roof. The cellar is connected to the outside by a flight of stairs or a disabled lift to the inside of the church. The community café looks fantastic and using the old iron pillars in the cellar gives it a unique character.



New seating area



Coffee bar



During renovation



Small prayer room

Budleigh Salterton Cricket Club

In 2022, the Club was forced to relocate due to flood prevention works in the River Otter valley. The old club was frequently flooded so, with compensation from the Environment Agency, some European funding and gifting of the new site by Clinton Devon Estates, the club relocated and was able to fund a new clubhouse and two new pitches. Unfortunately, increases in materials and construction costs threw the project off budget, jeopardising the inclusion of many other elements, including the kitchen, which was crucial to the functioning of the new clubhouse as a source of income for many other elements.

The club put forward an application to Valencia Communities Fund for £50,000 for funding towards the kitchen and this was granted.

The spectacular building is complete and operational. The new commercial kitchen is the beating heart of the new restaurant 'The Holt', and it is already attracting lots of new bookings such as parties, walkers and many people who have never been to a cricket club before, just dropping in for coffee and cake.



Completed clubhouse



Community ready



Kitchen completed



Sunrise from the new club



The Alice Cross Community Centre

The Alice Cross Centre is a busy community centre in Teignmouth and food is at the core of its services, with a meal delivery service four times a week to older people with limited mobility at home, daily lunches, and a community cafe within the centre.

The centre was struggling to increase its capacity to deliver meals with the old kitchen and wanted to be able to meet the demand for its services. The kitchen was mostly 20-30 years old, a mix of domestic and old stainless steel commercial units. The main gas range had been condemned and the extractor system was below modern standards. A new kitchen would have better working zones, storage, more energy-efficient units and enable the chef and volunteers to work more effectively, with new sinks, dishwasher, and range. To achieve this, the centre approached Valencia Communities Fund for £48,000.

Their chef has been so happy since the new kitchen was fitted as it flows much more effectively for service, and they have significantly increased the number of meals produced weekly. There is now reliable hot water and a proper dishwasher.

It has enabled the centre to start producing home-cooked, affordable nutritious meals for their service users whilst providing another income stream for the charity. They are also attracting new rental users for the kitchen too, for cookery courses for adults with additional needs and for the local school's enrichment week and to cater for events and parties.

"The grant we received from Valencia Communities Fund for a new commercial kitchen was a lifeline for the Alice Cross Centre. We are incredibly grateful to Valencia Communities Fund for providing us with this grant which has helped us and our community in so many ways. Thank you."

Jacqueline O'Brian
General Manager
The Alice Cross Centre



Kitchen before



Kitchen after

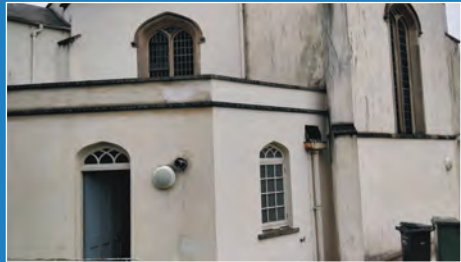
Holy Trinity Church Blackford Wedmore

Holy Trinity is a striking Grade-II listed village church of unusual octagonal design. It stands in a prominent position in Blackford village. The exterior paintwork had deteriorated and showed blackened discolouration. Additionally high-level guttering and lead flashings had become detached allowing damp penetration.

Valencia Communities Fund awarded £19,786 to this project, which entailed treating walls with a fungicide and repainting the whole of the exterior of the church in a modern breathable paint. Guttering and flashings were also repaired.

“The finished job looks stunning and would not have been completed without Valencia Communities Fund support.”

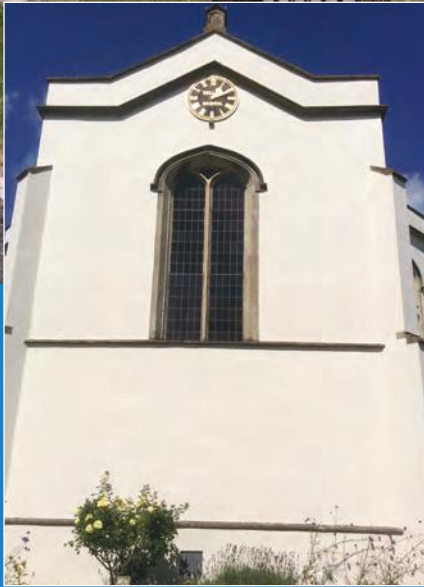
David Sisson
Holy Trinity, Blackford. PCC



West face before



Before



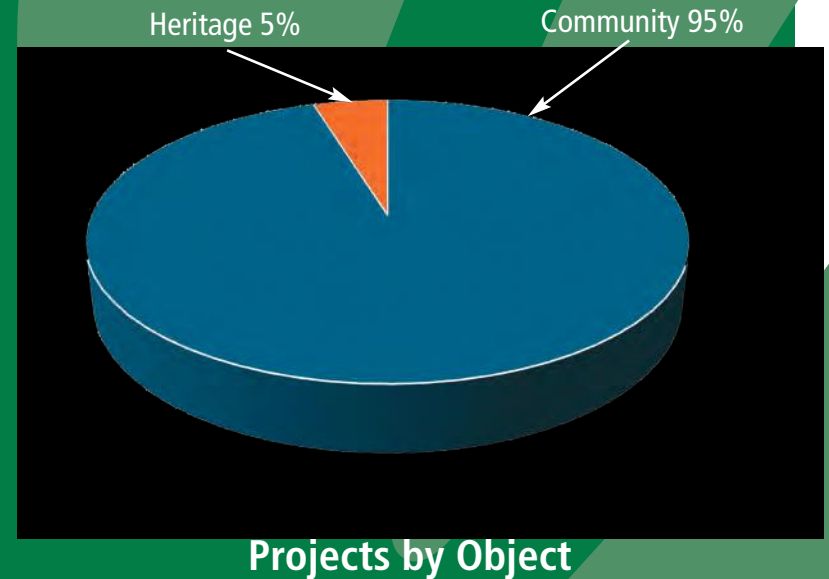
After

Number of Projects per Facility Type



Scottish Landfill Communities Fund

The Scottish Landfill Communities Fund (SLCF) is a tax credit scheme, linked to Scottish Landfill Tax, that encourages landfill site operators to provide contributions to Approved Bodies (Valencia Communities Fund is an Approved Body in Scotland). Valencia Communities Fund can consider applications from anywhere in Scotland that are within 10 miles of an active landfill site or a transfer station. This allows Valencia Communities Fund to consider funding more projects than before. This year (2023/24) we have awarded £329,330 to 18 projects throughout Scotland, funding £313,590 between 17 projects to sustain or develop community facilities, £15,740 allocated to 1 project to repair, preserve, or renovate places of historical or architectural interest or places of worship.



SLCF Funded Projects

St Peter's Scottish Episcopal
Church Hall, Edinburgh
New Roof
£25,000

Athelstaneford Kirkyard
Path Upgrade
£25,000

East Kilbride Indoor Bowling Club
New Bowling Carpet
£25,000

St Matthew RC Church Hall,
Bishopbriggs
Renovation
£25,000

Irvine Tennis Club
Floodlights
£24,043

Gala Rugby Club, Galashiels
Pitch Drainage
£23,923

St Patrick's Church Hall, Wishaw
Entrance Refurbishment
£23,620

Forth Mining Memorial
£22,500

St Anthony's Church, Rutherglen
Heating
£22,213

Elgin Tennis Club
Upgrade of Courts
£20,230

Prestwick Tennis & Fitness
New Padel Court and Canopy
£17,220

Upperton & Greengeers Cycle
Path
Land Purchase
£16,000

VIP Arts & Sports Academy,
Uddingston
Toilets
£16,000

St Benedict's Church, Easterhouse
Windows Refurbishment
£15,740

Sidlaw View Park, Birkhill
Drainage
£15,477

Musselburgh Old Course Golf
Club
Windows Replacement
£4,975

Seaboard Playpark, Tain
Improvement
£4,538

Strathmartine Bowling Club
Heating
£2,851





New cage



Old cage



New cage parts

Meadowmill Sports Centre

The throwing cage at Meadowmill is an essential piece of equipment, used by members and clubs to train multiple times per week. The old cage was showing sign of wear and tear and was no longer suitable for practise or competition. A new cage was required to enhance the experience of users.

The new throwing cage, part-funded with an award of £21,350 from Valencia Communities Fund, through the Scottish Landfill Communities Fund, has put Meadowmill Sports Centre firmly 'on the map' as an option for athletics training and events.

Athletics members, users, and clubs have reacted positively to installation of the throwing cage and the charity is in talks to once again host athletics competitions at Meadowmill.

"The installation of the Thor-9 throws cage is incredibly exciting for Enjoy Leisure colleagues, members and users, as well as the local clubs. It will allow the return of East Lothian's throwing athletes to the arena and inspire people to try out the events. I hope we can encourage the next generation of Scottish athletes to try hammer and discus. The throws cage is a real asset to the local community and I'm very pleased to have seen the project to fruition."

Juliet Gold
Sports Development Manager
Enjoy Leisure

St Athanasius' Church, Carlisle

St Athanasius' Church is 160-years old and access to the church had been problematic for some time. Following several phases of internal refurbishment, attention turned to improving access and Valencia Communities Fund awarded £14,100 towards this final phase.

A new frontage was constructed that included new steps with balustrade, adjoined by a ramp. The new access is illuminated by two lights for dark evenings and the door to the church was also refurbished to complete the project.

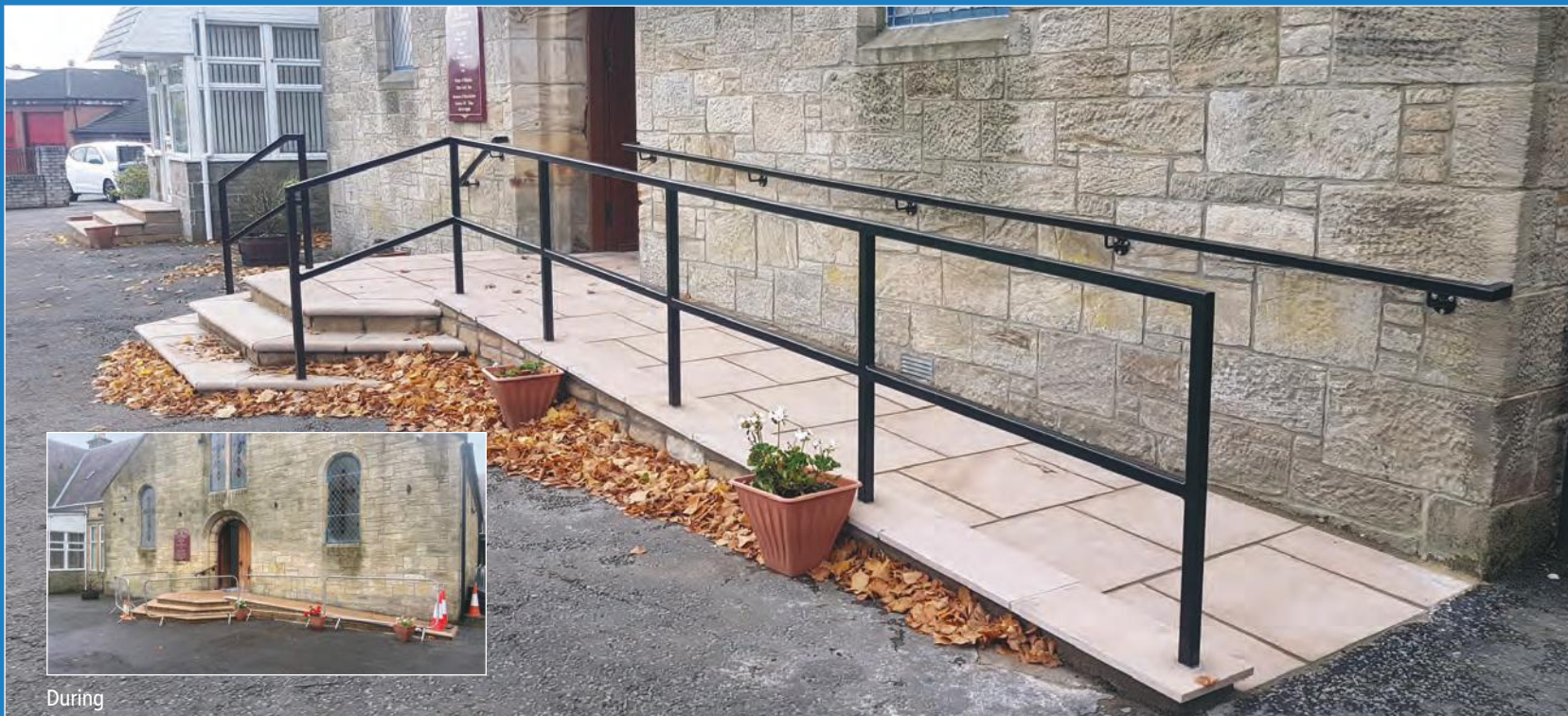
The new access has been a success for the congregation who can now welcome others into the church through this fully-accessible front entrance.



Entrance before



Inside towards door



During

St Boswell Lawn Tennis Club

St Boswell is a popular club that suffered high maintenance and running costs of the old halogen lighting. An award from Valencia Communities Fund replaced the old bulbs with energy-saving LEDs using the posts. The new lights save the club money on replacing old bulbs as well as electricity costs, and the lights provide a brighter, more even illumination for the courts.

“We are grateful to now have a reliable set of lights which also make a huge difference to visibility on the courts for players of all ages. We are also expecting 60 per cent savings on our electricity bill thanks to the environmentally friendly LEDs and also reduced maintenance than the previous floodlights, so it is great for the club’s finances too.”

Matt Tile
Club Chairperson



Old lights

The Board of Trustees

The Board is made up of volunteers who bring expertise and experience to the strategic direction of Valencia Communities Fund. The objectives of the Board are the promotion of participation and partnership, as well as supporting environmentally sustainable projects with an emphasis on volunteering, value for money, and proven need. The Board considers applications for funding over £50,000.



Left to right: Simon Catford, Peter Renshaw, Mary Prior CVO MBE, Joe Parry, David

The Team



Left to right: Nick Berry, Karen Chilcott, Alison Salvador, Gareth Williams, Tony Painter

General Manager Alison Salvador is responsible to the Board of Trustees for the leadership, strategic direction, and overall management of Valencia Communities Fund.

Gareth Williams, Operations Manager, is responsible for delivering the operational function of Valencia Communities Fund, including applications, compliance, and communications.

The Project Liaison Officer in England, Dr Nick Berry and the Project Liaison Manager in Scotland, Michael Cunningham, will visit every project prior to consideration for funding and completion.

Tony Painter and the team work closely with applicants from the initial enquiry through the application stages to project completion to ensure eligibility and compliance with our funding and the regulation of the scheme.

Payments to projects are administered by Karen Chilcott, who is also responsible for monitoring funded projects through quarterly reporting to the funding group and Board.



**Valencia
Communities
Fund**

Valencia Communities Fund

PO Box 977
Taunton, TA1 9PQ

enquiries@valenciacommunitiesfund.co.uk
www.valenciacommunitiesfund.co.uk

T: 01823 476476

X @ValenciaComFund